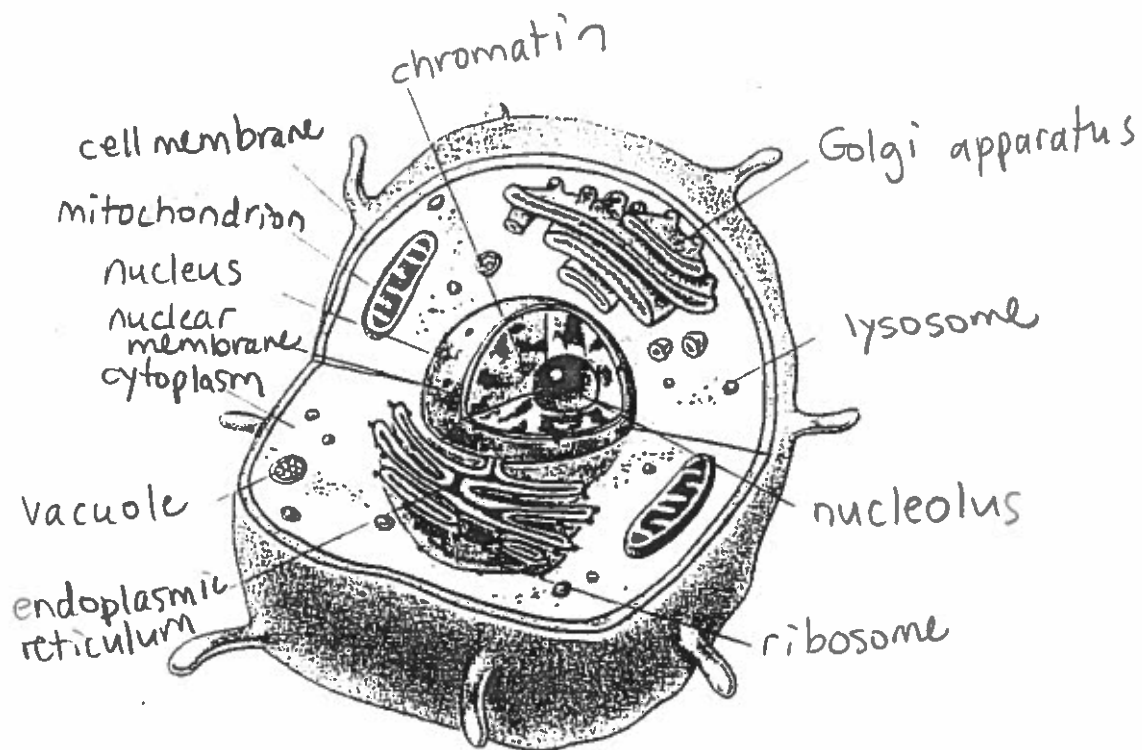


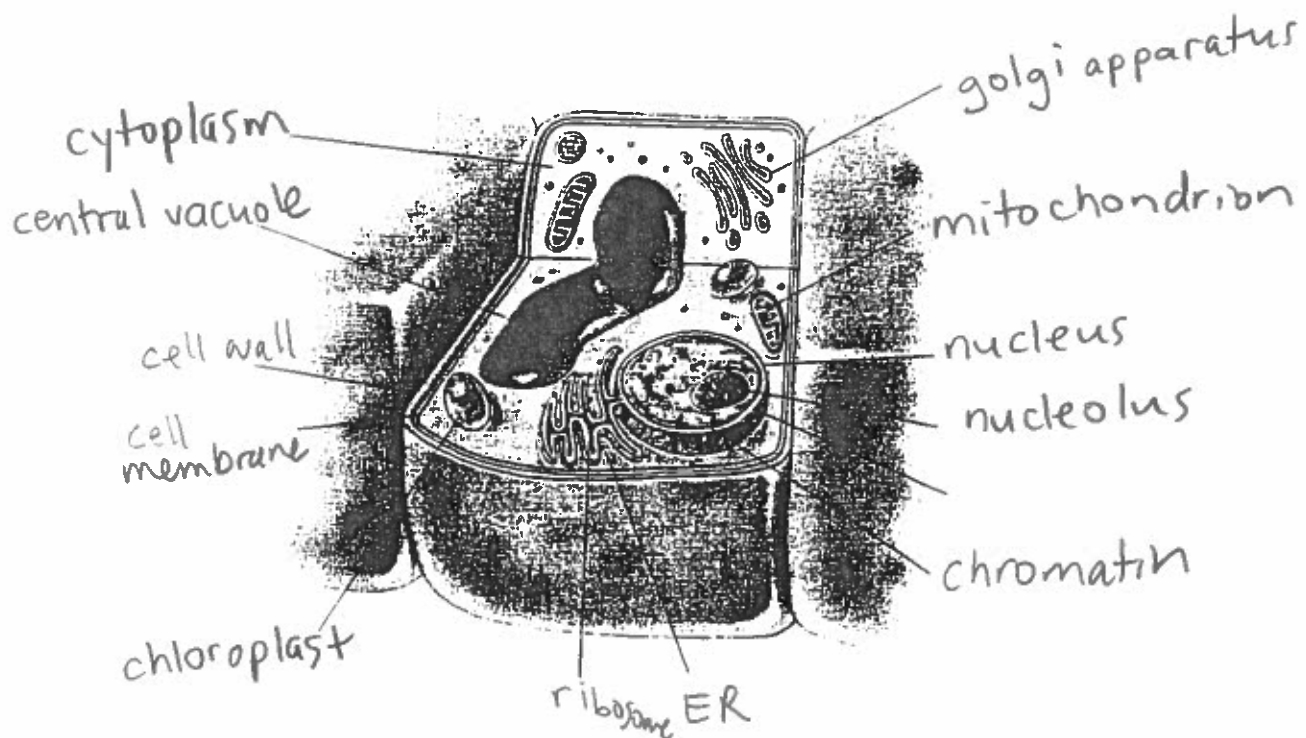
Cells Practice Quiz

Try to label the following parts of the cells below without looking at your notes!

Parts of a Typical Animal Cell



Parts of a Typical Plant Cell



PARTS OF THE CELL—MATCHING

Name ANSWERS

Match the descriptions in Column I with the name in Column II.

Column I

- G 1. holds nucleus together
- F 2. surface for chemical activity
- P 3. units of heredity
- O 4. digestion center
- E 5. where proteins are made
- H 6. structures involved in mitosis in animal cells only
- T 7. hollow cylinder that supports and shapes cell
- M 8. shapes and supports a plant cell
- A 9. stores and releases chemicals
- K 10. food for plant cells is made here
- R 11. spherical body within nucleus
- L 12. controls entry into and out of cell
- J 13. traps light and is used to produce food for plants
- B 14. chromosomes are found here
- I 15. jellylike substance within cell
- C 16. contains code which guides all cell activities
- Q 17. minute hole in nuclear membrane
- N 18. "powerhouse" of cell
- D 19. contains water and dissolved minerals
- S 20. stores food or contains pigment

Column II

- a. Golgi bodies
- ~~b.~~ nucleus
- ~~c.~~ chromosomes
- ~~d.~~ vacuole
- ~~e.~~ ribosomes
- ~~f.~~ endoplasmic reticulum
- ~~g.~~ nuclear membrane
- ~~h.~~ centrioles
- ~~i.~~ cytoplasm
- ~~j.~~ chlorophyll
- ~~k.~~ chloroplasts
- ~~l.~~ cell (plasma) membrane
- ~~m.~~ cell wall
- ~~n.~~ mitochondria
- ~~o.~~ lysosome
- ~~p.~~ genes
- ~~q.~~ nuclear pore
- ~~r.~~ nucleolus
- ~~s.~~ plastid
- ~~t.~~ microtubule